

The VM900 software is used to record speech files and copy them to a CF memory card for use in the Turn-O-Matic VM900 Voice Module.

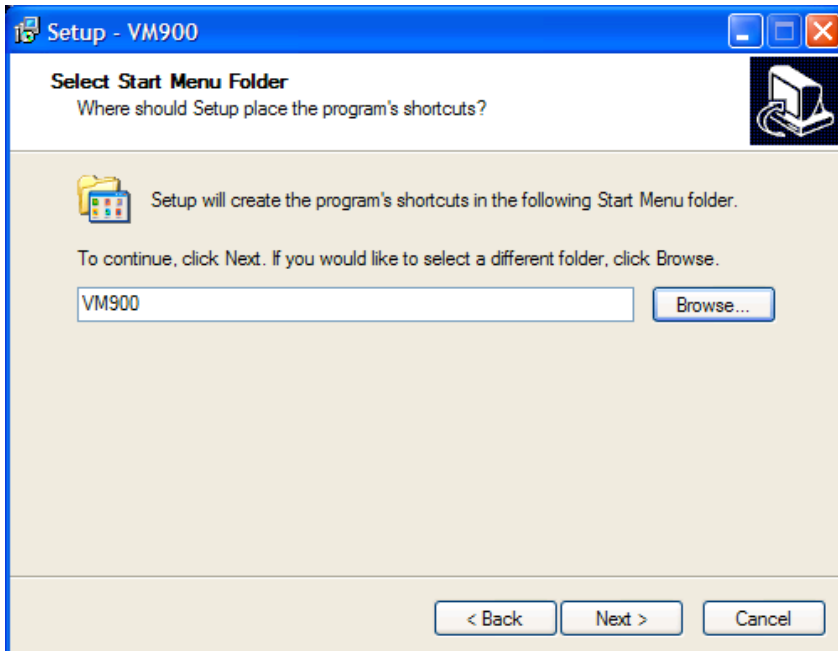
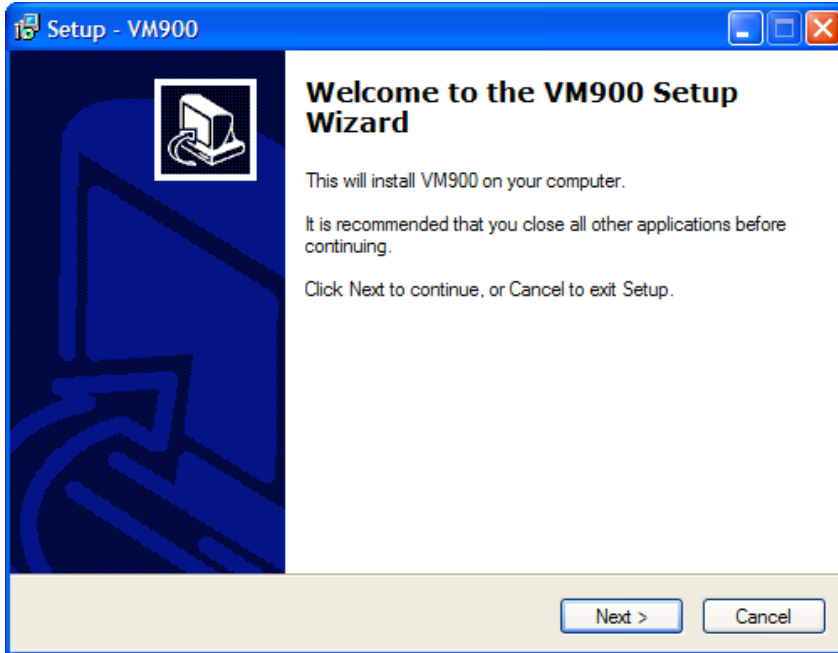
#### System Requirements.

- 1) A computer running Windows 98 or later operating system.
- 2) A CF (Compact Flash) card recorder integrated in or attached to the computer. CF Card Recorders attached via the USB port are commercially available.
- 3) A sound recording microphone integrated in or attached to the computer.

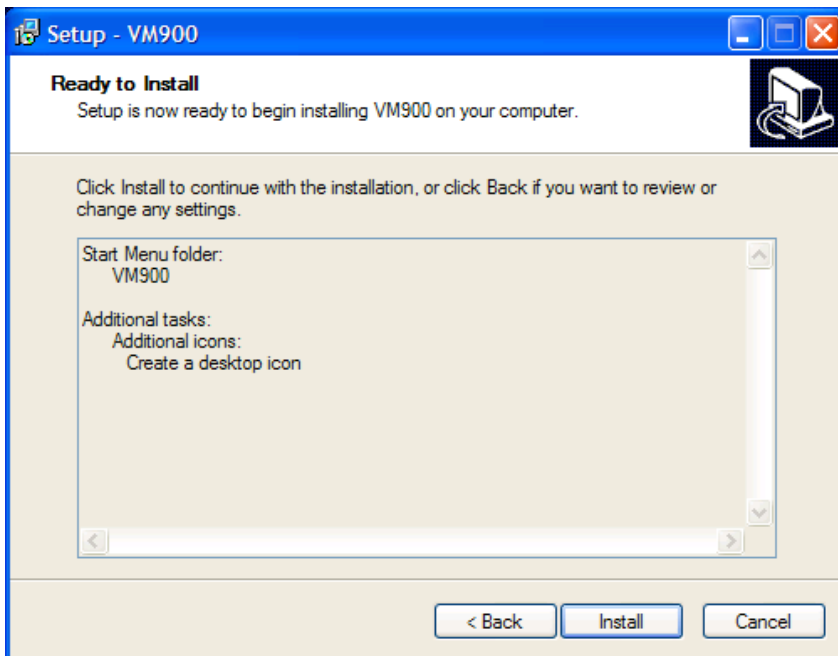
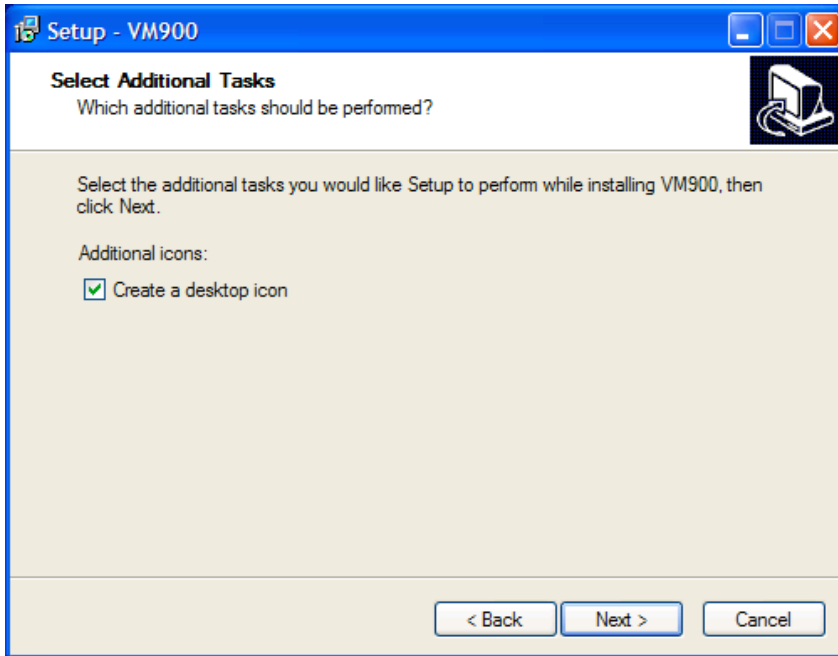
#### Recommended additional software:

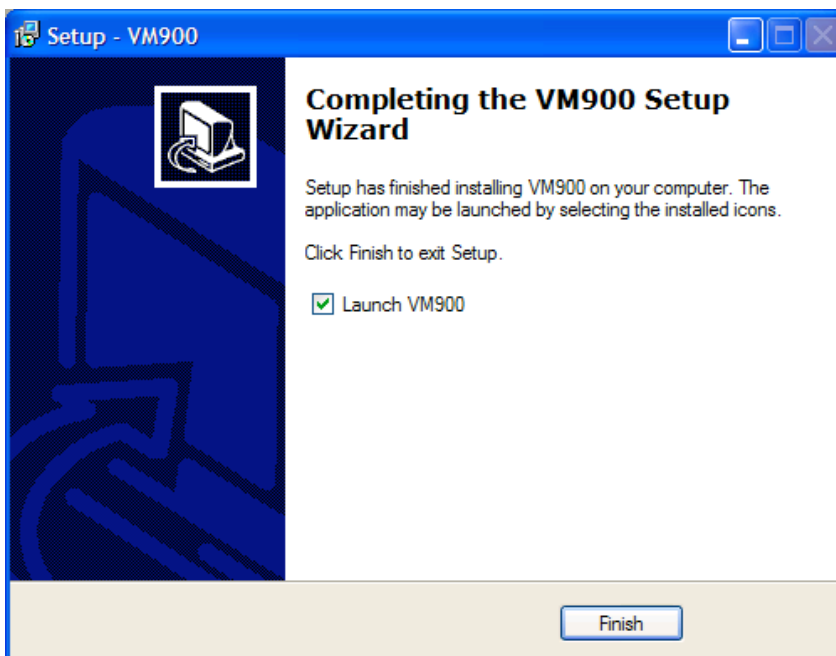
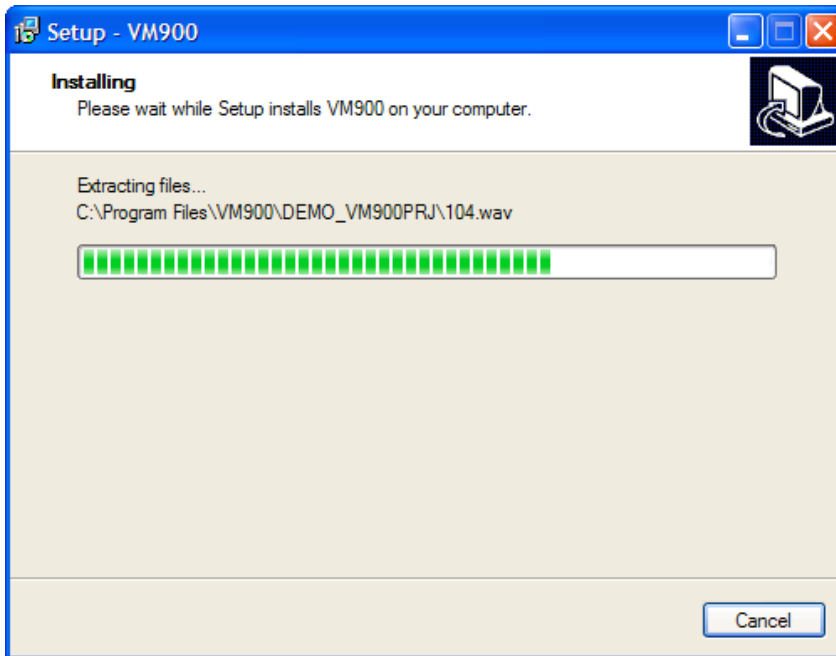
- 1) Basic sound editing software for editing WAV sound files for fine-tuning, such as removing DC and silence in the recorded files. The freeware program Wavosaur', found at <http://www.wavosaur.com> is a good choice.

**VM900 Installation: Run VM900 setup.**

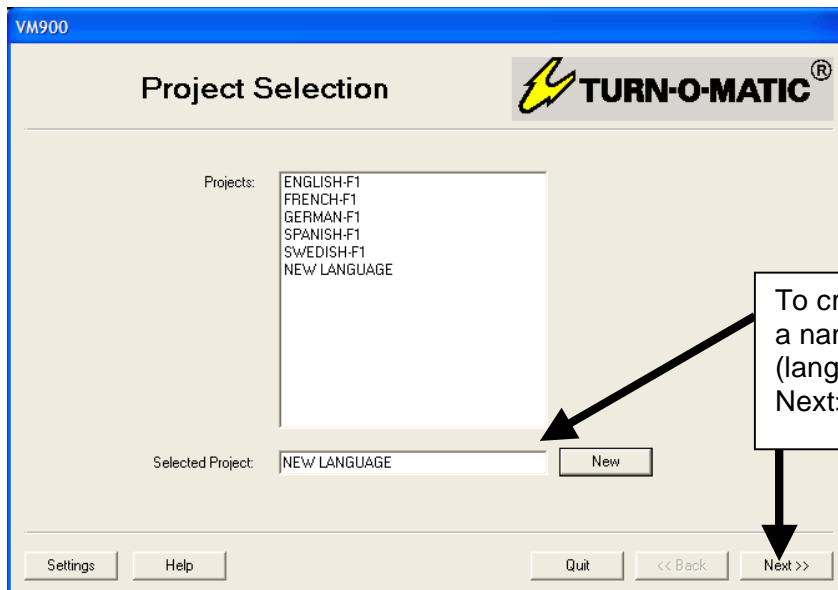
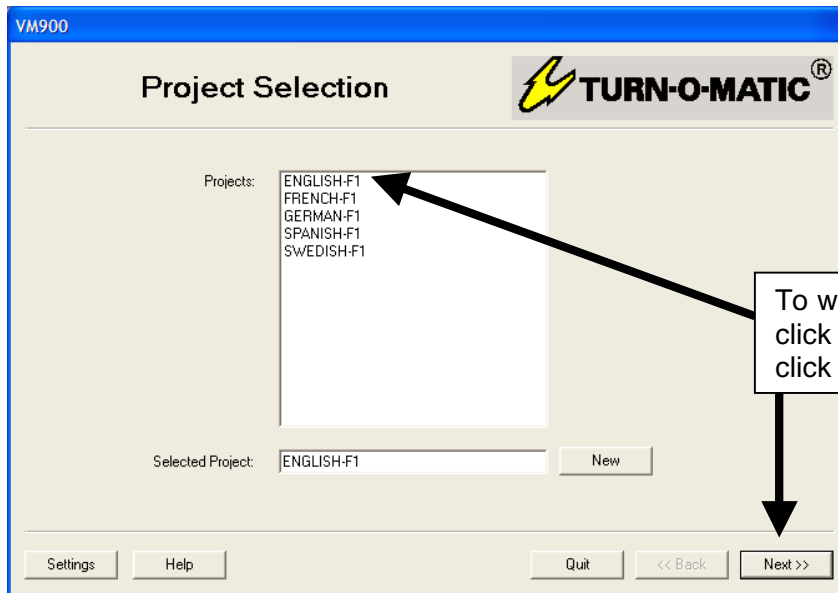


### VM900 Installation: Option to create desktop icon.

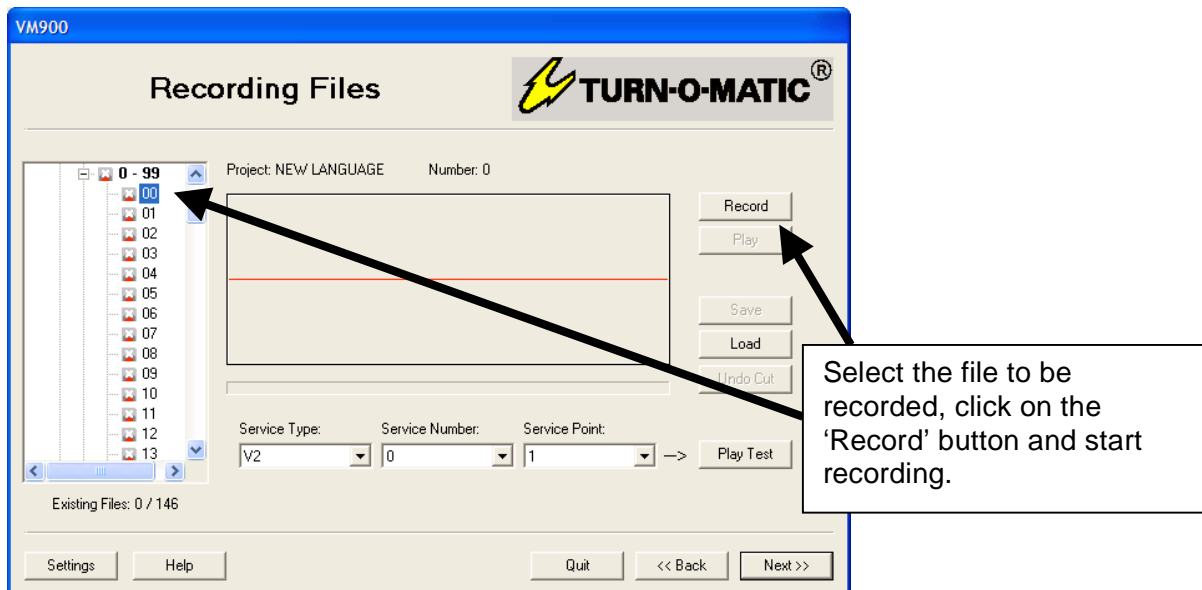
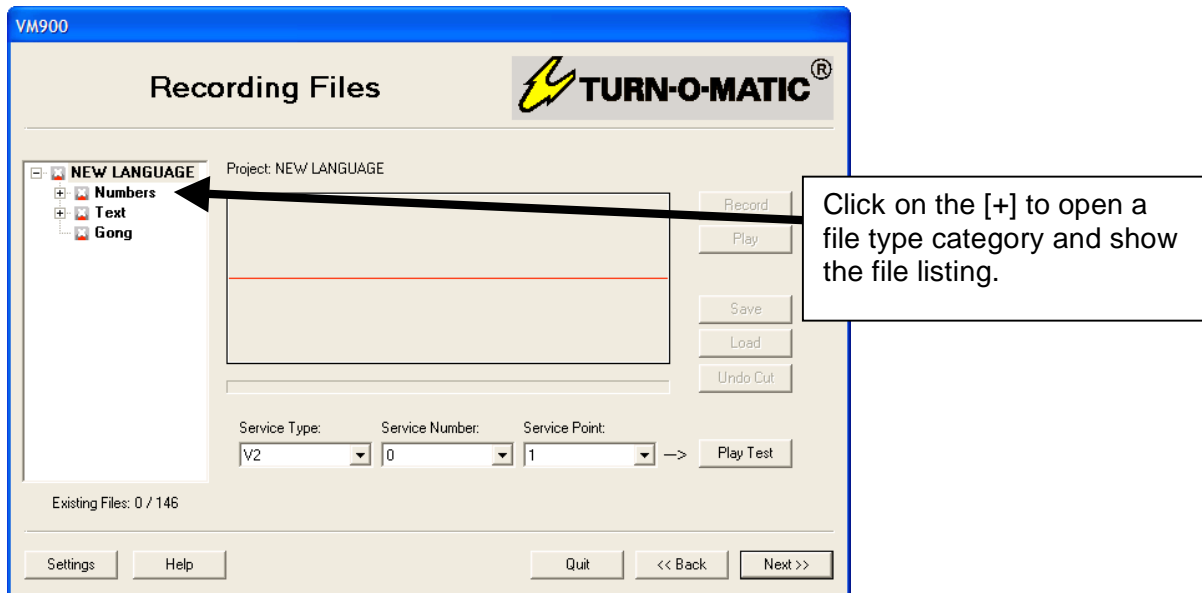


**VM900 Installation: Option to launch VM900 when setup is complete.****Notes:**

- 1) Run the VM900 software at anytime by clicking on the desktop icon or select it from the Windows start menu under 'All Programs – VM900'.

**VM900 Operation; Select existing or Create New Project (Speech Files).**

## VM900 Operation; Recording speech files.



### Notes:

- 1) Use 'Load' to import a WAV format file to the project.
- 2) Use 'Play Test' to hear complete phrases after recording the files.
- 3) See the next page for a complete list of files for a project and WAV file specifications.

#### 4) VM900 Operation; Speech file reference.

Wave files in VM900 Project:

**000.wav ... 099.wav** = numbers 0 ... 99

**101.wav ... 109.wav** = numbers 100 ... 900

**110.wav** = Ver 2, Pre-Text

**111.wav** = Ver 2, Mid-Text

**112.wav** = Ver 2, Post-Text

**128.wav** = Recall Service Type A, Pre-Text

**129.wav** = Recall Service Type A, Mid-Text

**130.wav** = Recall Service Type A, Post-Text

**113.wav** = Service Type A, Pre-Text

**114.wav** = Service Type A, Mid-Text

**115.wav** = Service Type A, Post-Text

**131.wav** = Recall Service Type B, Pre-Text

**132.wav** = Recall Service Type B, Mid-Text

**133.wav** = Recall Service Type B, Post-Text

**116.wav** = Service Type B, Pre-Text

**117.wav** = Service Type B, Mid-Text

**118.wav** = Service Type B, Post-Text

**134.wav** = Recall Service Type C, Pre-Text

**135.wav** = Recall Service Type C, Mid-Text

**136.wav** = Recall Service Type C, Post-Text

**119.wav** = Service Type C, Pre-Text

**120.wav** = Service Type C, Mid-Text

**121.wav** = Service Type C, Post-Text

**137.wav** = Recall Service Type D, Pre-Text

**138.wav** = Recall Service Type D, Mid-Text

**139.wav** = Recall Service Type D, Post-Text

**122.wav** = Service Type D, Pre-Text

**123.wav** = Service Type D, Mid-Text

**124.wav** = Service Type D, Post-Text

**140.wav** = Recall Service Type E, Pre-Text

**141.wav** = Recall Service Type E, Mid-Text

**142.wav** = Recall Service Type E, Post-Text

**125.wav** = Service Type E, Pre-Text

**126.wav** = Service Type E, Mid-Text

**127.wav** = Service Type E, Post-Text

**143.wav** = Ver 3, Pre-Text

**144.wav** = Ver 3, Mid-Text

**145.wav** = Ver 3, Post-Text

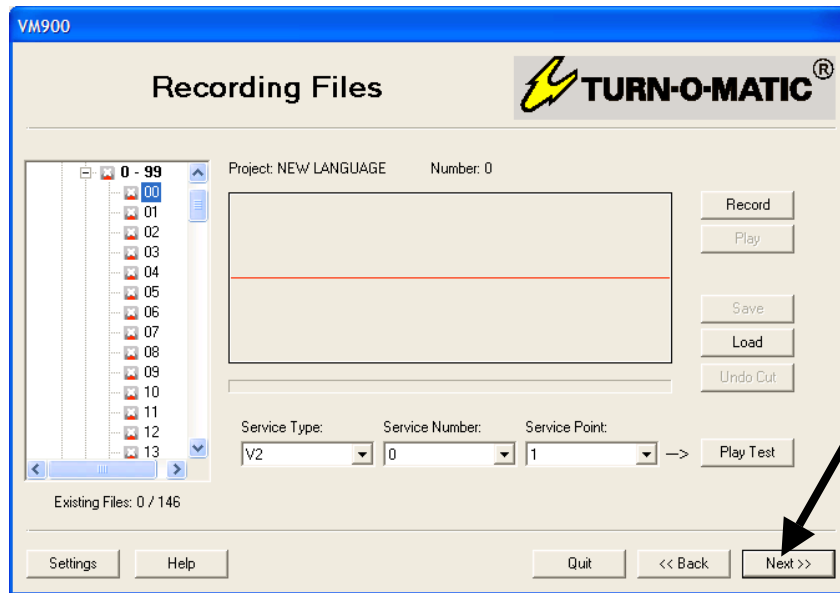
**146.wav** = Gong

WAV file specification: PCM, 16bit MONO, 16000Hz audio sample rate

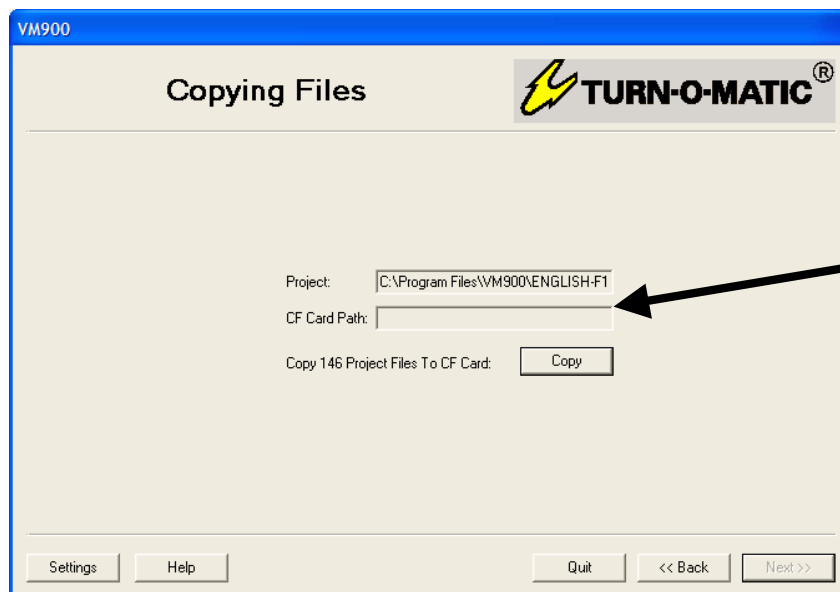
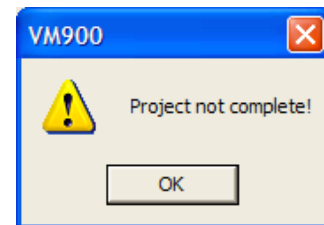
Notes:

- 1) Pre-Text leads the called number with a text such as 'Now Serving'.
- 2) Mid-Text is only used for Parallel service applications, directing customers to the calling service counter with a text such as 'Please go to counter'.
- 3) Post-Text is an optional ending text such as 'Thank You!'.

### VM900 Operation; Copying Projects (speech files) to CF speech cards.



Click on the Next>> button to proceed to Copying Files. If the Project is not complete with all speech files, the warning window shown below will appear.



The CF card recorder will normally appear as a 'removable drive' under Windows and if found will appear here. If a CF card recorder is attached and not detected, use 'Settings' to direct VM900 to the location.

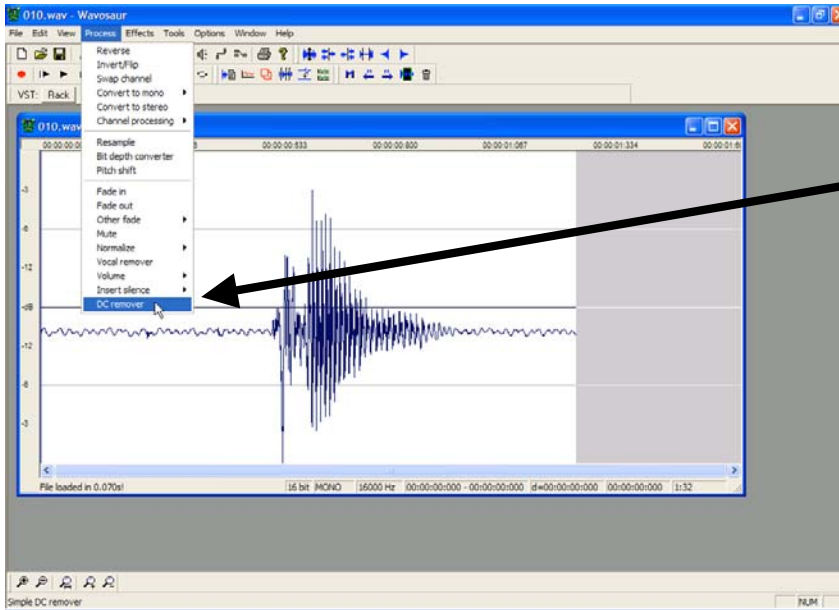
CF card readers connected via USB are commercially available.

#### Notes:

- 1) Any type of CF (Compact Flash) memory card should be compatible with the VM900 as long as it is formatted with **FAT** file system type. CF cards of up to 512MB have been created with the VM900 software and have worked OK on the VM900.
- 2) Before reusing a CF card with existing files, **reformat the card (FAT file system type)**. Do not simply delete the old files and copy new files to the card. Quit the VM900 program before formatting CF cards to be sure that Windows does not show the 'device in use'.

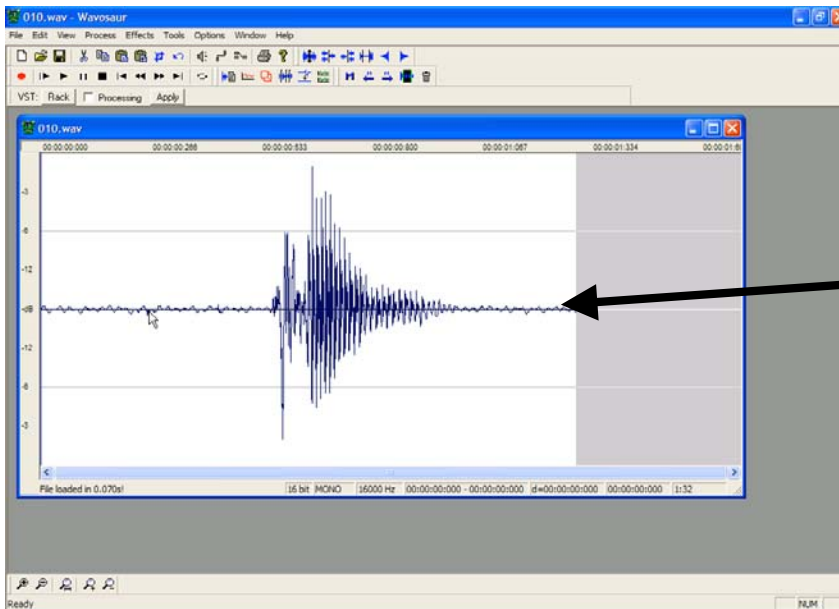


**Advanced Information; Fine tuning speech files – DC remover.**



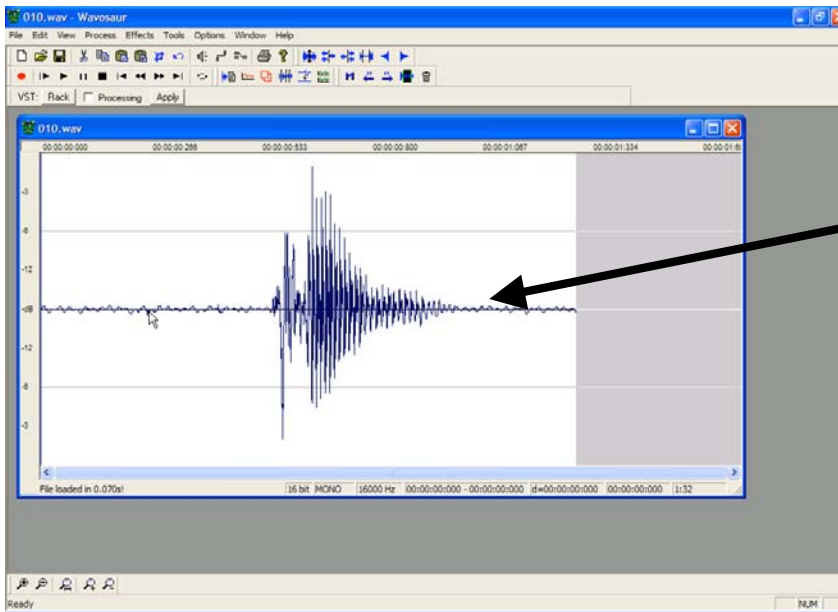
A simple WAV file editor can be used to improve the quality of recorded speech files. The example here is the freeware program 'Wavosaur', found at <http://www.wavosaur.com>.

The DC remover removes the DC components of the audio signal arising from low-quality analog-to-digital converters.



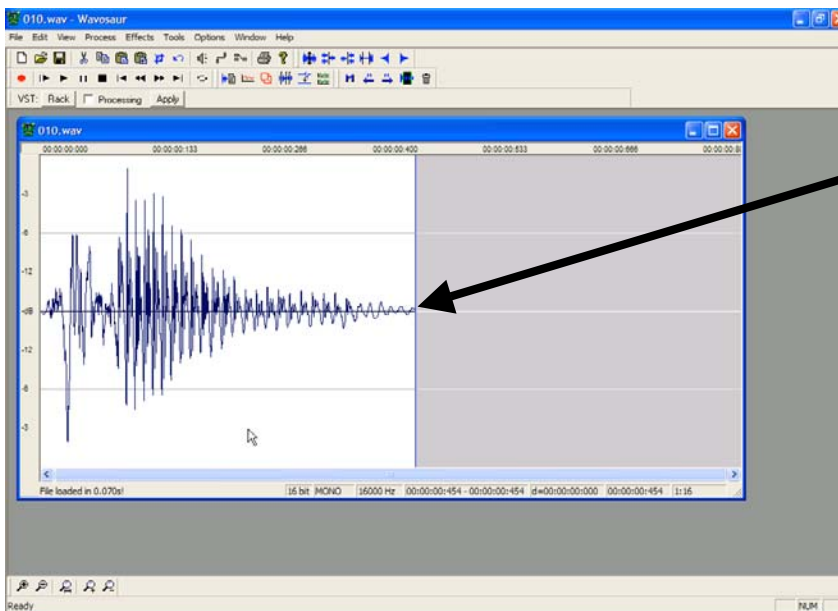
File with DC removed.

**Advanced Information; Fine tuning speech files – remove silence.**



Speech 'strings' will sound better without periods of silence in the individual recordings.

Mark the silence portion of the recording and press the 'Delete' key or click on the scissors icon to remove it.



File with silence removed.